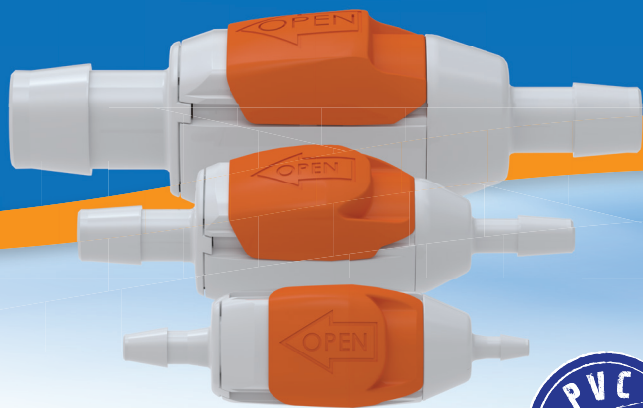


Eldon James

SeriesLock™
CHANGING THE WAY YOU CONNECT



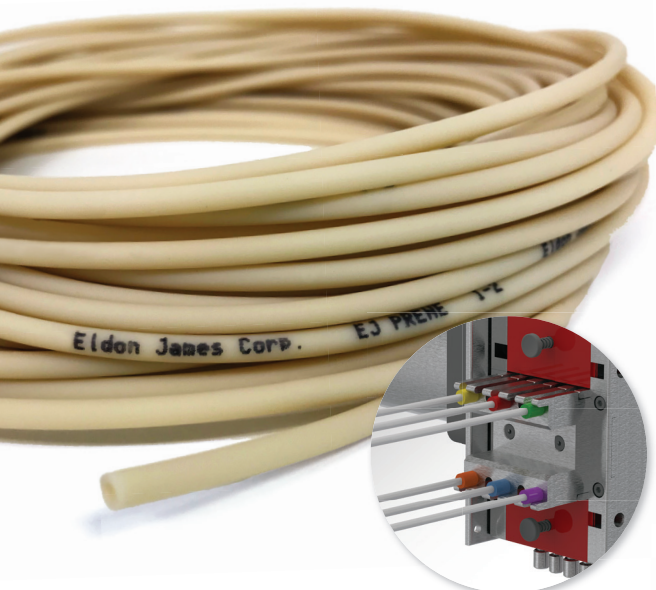
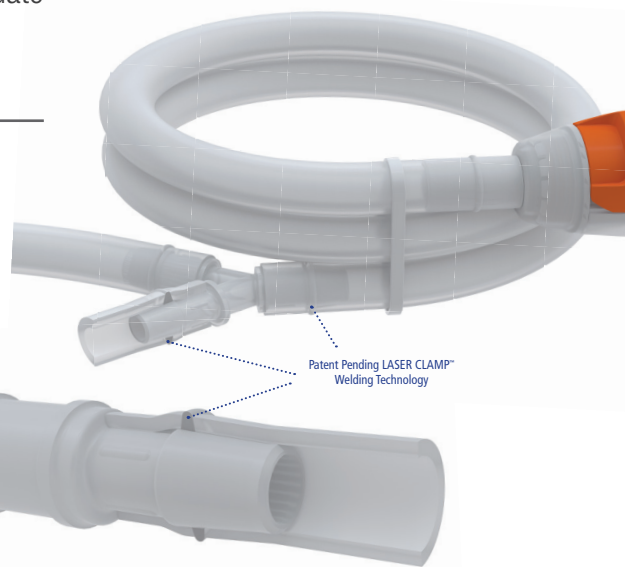
What's New?

Eldon James 2018 Newest Innovations

Eldon James introduces SeriesLock™ the newest innovation in quick disconnect couplers. The unique Spring-Free Flow Path™ coupler allows a larger volume of fluid or air to pass through optimizing the flow, reducing restriction, turbidity, foaming and bubbles. Three body sizes are available to accommodate barb sizes ranging from 1/8" ID to 3/4" ID Tubing.

New LASER CLAMP™ Welding Technology

EJ BioMed, an Eldon James company is revolutionizing the assembly process with its patent pending LASER CLAMP™ welding technology. Our single-barb connector design and coordinating tubing eliminates the need for clamps or adhesives.



Introducing NEW EJ Prene Pump Tubing and Flexelene™ 135C, 121C offer superior performance in peristaltic pumps with precise flow rates and chemical resistance.

Peristaltic Pump Accessories

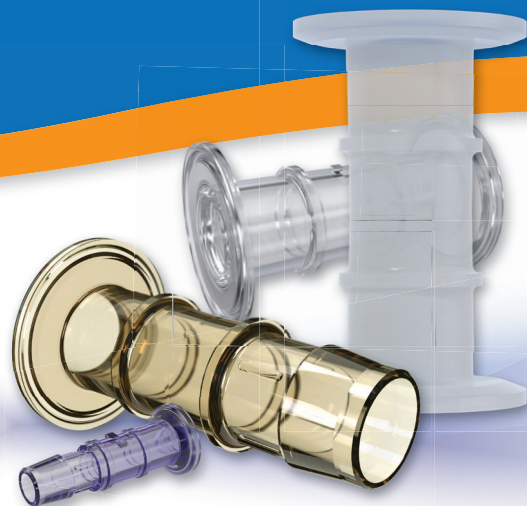
- 2 and 3 Stop Tubing Assemblies
- Pump Manifold Assemblies



WWW.ELDONJAMES.COM ▪ 970-667-2728

Sanitary Flange Fittings

Eldon James sanitary flange fittings were designed to allow for easy assembly and optimized tubing connections. Five materials are available in mini and 1" flange sizes. Barb sizes include 1/4", 3/8", 1/2", and 1"

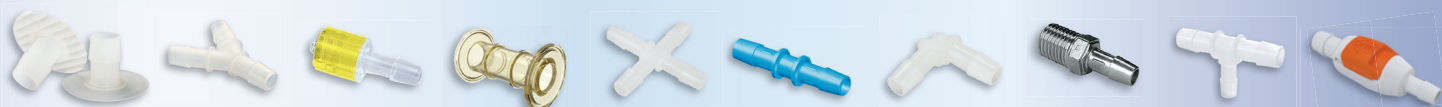


BAG PORTS



Eldon James offers a wide range of bag ports for single use. Bag ports, also known as port plates and port discs, are designed to be ultrasonic or thermal welded to medical and bio-reactor bags of like material.

Barb sizes range from 1/8" to 1", and four base types. Opposing Barb Port Discs, Flat Plate Port Discs, Mini Dome Port Discs, Ribbed Base Port Plates, and NEW Wedge and Boat Ports.



YOUR SINGLE SOURCE MANUFACTURER

of PVC-Free Tubing, Fittings, Quick Disconnects and Assemblies

Call us today 970-667-2728



SeriesLock™
CHANGING THE WAY YOU CONNECT

Introducing SeriesLock™ the newest innovation in quick disconnect couplers.

WWW.ELDONJAMES.COM

